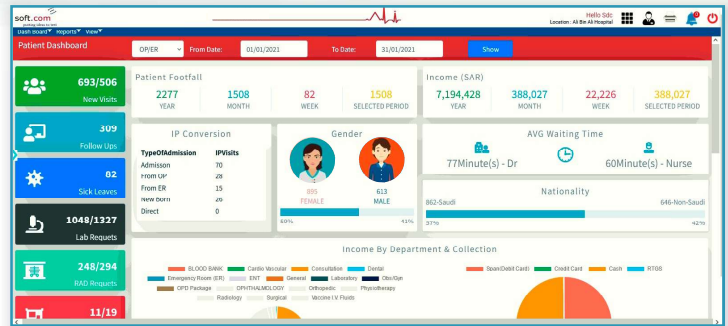




**MIS Dashboard**

**Soft.ProDoc**  
Hospital Management  
Information System  
with *flexi* EMR



**Enterprise Healthcare Solutions with Clinical Excellence**

- Appointment Management (Web & Mobile App)
- Out Patient Management (OP, Emergency, Day-Care & Health Checkup)
- Patient Queuing System
- Doctors Desk (EMR)
- Laboratory Information System (LIS)
- Radiology Information System (RIS)
- In-Patient Management (Admission, Discharge, Transfer & IP Nursing)
- Operation Theater Management
- IP Billing
- Purchase
- Pharmacy (In Patient & Retail)
- Stores Management
- Labour
- Electronic Health Record Management (MRD)
- Management Information System (MIS)
- Insurance & Claims Management, Corporate Billing
- CSSD (Central Sterile Services Department)
- FSD (Food Services Department)
- Asset Maintenance
- Laundry & Linen
- HelpDesk
- Blood Bank
- Mobile App (Patient, Doctor and Management Login)
- NABH Quality Indicators

## About Soft.Com

Soft.Com is an ISO 9001:2015 Certified IP-led services company based in Mumbai, India initiated by two IIT-Bombay alumni and offers technology specific expertise to industries like Healthcare, Banking, Financial Management and Insurance with its multi-talented Core Development, Project Management, Support and Sales Team. Soft.Com is capable of providing solutions to stakeholders through its in-house developed tools for Data Science, Mobile Applications and Application Modernization.

## Why Soft.ProDoc

Soft.ProDoc has been built with over 5000+ man-months of effort in development and implementation with hospitals ranging from 50 to 500 beds in JCI & NABH accredited Hospitals in India and Overseas. Soft.ProDoc is evolving to meet changing needs of Healthcare Providers such as Population Health Analytics, Patient Engagement & Education. It has been integrated with real time mini analytics tool and mobile application, built with valuable inputs from across the healthcare value chain including Clinicians, Process Consultants, Nurses, Pharmacists and Information Technologists.

## Special Features

- Appointment Management System - Web & Mobile App
  - Mobile App for Patient, Doctor & Management
  - Barcode / QRCode at various instances
  - Wrist Band Printing for Patient Identification
  - Patient Identification in Laboratory / Radiology
  - Critical Result Notification
  - Patient Calling System - Queue Management
  - Auto SMS / E-Mail / App Notification Trigger at multiple instances
  - Drug Formulary Integration (Drug-To-Drug, Drug-To-Allergy, Drug-To-Food)
  - Patient Allergy Alerts across Modules
  - ICD-10 Database Integration
  - Critical, Operational and Financial Analytics on web
  - Patient Assessment Forms as per JCI requirements
  - Multi Day / Visit OP Health Checkup Plan
  - Multi Tariff, Effective Date Tariff Activation
  - Standard Fixed Discounts
  - Multiple OP / IP Pharmacies with Bilingual / Multilingual Pharmacy Labels
  - Dynamic Form Designing with Image Annotation & Scoring Capabilities
  - Main / Sub Stores Auto Reorder Levels / Procurement
  - Clinical Templates for different Specialities & Sub-Specialities
  - Nursing Module with Nursing Care Plan
  - Co-Pay & Multi Payer Insurance & Corporate Billing
  - Auto Fill Discharge Summary
  - Digital Bilingual / Multilingual Consent Form with E-Signature
  - Unidirectional & Bi-Directional Lab Equipment Interfacing
  - Claims Validation / Online Claims Submission (Interfacing with Payer's Module)
  - Patient Global Advance & Adjustment against all Billing including Pharmacy
  - Quick Access to user wise frequently accessed forms
  - Lab Reports to Patients through Mobile App
  - Configurable Formulae for Quality Indicators (NABH, JCI)
  - PACS (Picture Archiving & Communication System) Integration
  - FA (Financial Application) Integration
  - Payment Gateway Integration
  - Voice User Interface (VUI) - Speech-To-Text & Voice Command Navigation
  - HR / Finance / PACS Application<sup>#</sup>
- # - From Our Technology Partners

## Our Presence

Soft.ProDoc has presence\* from Rajasthan to Tamil Nadu & from Gujarat to West Bengal across India and in Africa, South America together with Middle East countries with 5000+ active users serving 3000+ beds with > 50000 lab samples each day.

\* A list of references can be provided on demand.

## Mobile App

